

Curah Hujan Harian (mm)

Nama Stasiun	GUNUNG NAGO	River Basin	Batang Kuranji
No Stasiun		Elevasi	
No In Database		Tipe alat	Manual
Lintang Selatan	-0.924511° LS	Pemilik	SDA & BK Wil Utara
Bujur Timur	100.434352° BT	Operator	ALIWAR

Tahun 2023

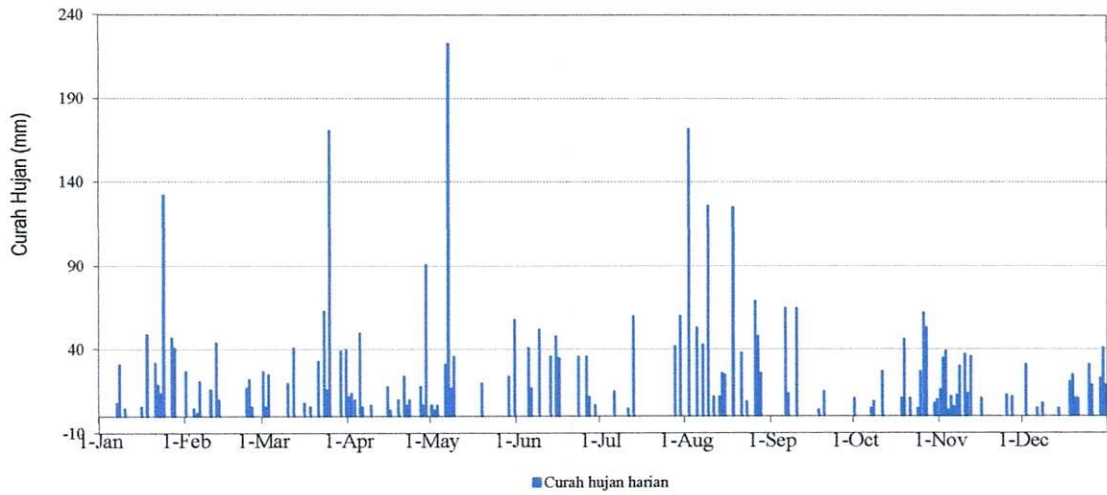
Tanggal	Bulan											
	Jan	Feb	Mar	Apr	Mei	Jun	Jul	Ags	Sep	Okt	Nop	Des
1	0.0	27.0	27.0	12.0	7.0	0.0	0.0	0.0	0.0	11.0	16.0	0.0
2	0.0	0.0	6.0	14.0	4.0	0.0	0.0	172.0	0.0	0.0	35.0	31.0
3	0.0	0.0	25.0	10.0	7.0	0.0	0.0	0.0	0.0	0.0	39.0	0.0
4	0.0	5.0	0.0	0.0	0.0	0.0	0.0	0.0	0.0	0.0	4.0	0.0
5	0.0	2.0	0.0	50.0	0.0	41.0	0.0	53.0	0.0	0.0	12.0	0.0
6	0.0	21.0	0.0	6.0	31.0	17.0	15.0	0.0	65.0	0.0	6.0	5.0
7	8.0	0.0	0.0	0.0	223.0	0.0	0.0	43.0	14.0	5.0	13.0	0.0
8	31.0	0.0	0.0	0.0	17.0	0.0	0.0	0.0	0.0	9.0	30.0	8.0
9	0.0	0.0	0.0	7.0	36.0	52.0	0.0	126.0	0.0	0.0	0.0	0.0
10	5.0	16.0	20.0	0.0	0.0	0.0	0.0	0.0	65.0	0.0	37.0	0.0
11	0.0	0.0	0.0	0.0	0.0	0.0	5.0	12.0	0.0	27.0	14.0	0.0
12	0.0	44.0	41.0	0.0	0.0	0.0	0.0	0.0	0.0	0.0	36.0	0.0
13	0.0	10.0	0.0	0.0	0.0	36.0	60.0	12.0	0.0	0.0	0.0	0.0
14	0.0	0.0	0.0	0.0	0.0	0.0	0.0	26.0	0.0	0.0	0.0	5.0
15	0.0	0.0	0.0	18.0	0.0	48.0	0.0	25.0	0.0	0.0	0.0	0.0
16	6.0	0.0	8.0	4.0	0.0	35.0	0.0	0.0	0.0	0.0	11.0	0.0
17	0.0	0.0	0.0	0.0	0.0	0.0	0.0	0.0	0.0	0.0	0.0	0.0
18	49.0	0.0	6.0	0.0	0.0	0.0	0.0	125.0	4.0	11.0	0.0	21.0
19	0.0	0.0	0.0	10.0	20.0	0.0	0.0	0.0	0.0	46.0	0.0	25.0
20	0.0	0.0	0.0	0.0	0.0	0.0	0.0	0.0	15.0	0.0	0.0	11.0
21	32.0	0.0	33.0	24.0	0.0	0.0	0.0	38.0	0.0	11.0	0.0	11.0
22	19.0	0.0	0.0	7.0	0.0	0.0	0.0	0.0	0.0	0.0	0.0	0.0
23	14.0	17.0	63.0	10.0	0.0	36.0	0.0	9.0	0.0	0.0	0.0	0.0
24	132.0	22.0	16.0	0.0	0.0	0.0	0.0	0.0	0.0	5.0	0.0	0.0
25	0.0	6.0	171.0	0.0	0.0	0.0	0.0	0.0	0.0	27.0	13.0	31.0
26	0.0	0.0	0.0	0.0	0.0	36.0	0.0	69.0	0.0	62.0	0.0	19.0
27	47.0	0.0	0.0	18.0	0.0	12.0	0.0	48.0	0.0	53.0	12.0	0.0
28	41.0	0.0	0.0	7.0	0.0	0.0	42.0	26.0	0.0	0.0	0.0	0.0
29	0.0		39.0	91.0	24.0	7.0	0.0	0.0	0.0	0.0	0.0	23.0
30	0.0		0.0	0.0	0.0	0.0	60.0	0.0	0.0	8.0	0.0	41.0
31	0.0		40.0		58.0		0.0	0.0		10.0		19.0
Hujan Maximum	132	44	171	91	223	52	60	172	65		39	41
Jml Curah Hujan	384	170	495	288	427	320	182	784	163	285	278	250
Jml. Hari Hujan	11	10	13	15	10	10	5	14	5	13	14	13
Hujan (1-15)	44	125	119	117	325	194	80	469	144	52	242	49
Jml. data kosong	0	0	0	0	0	0	0	0	0	0	0	0
Hujan (16-31)	340.0	45	376	171	102	126	102	315	19	233	36	201
Jml. data kosong	0	0	0	0	0	0	0	0	0	0	0	0

Catatan :

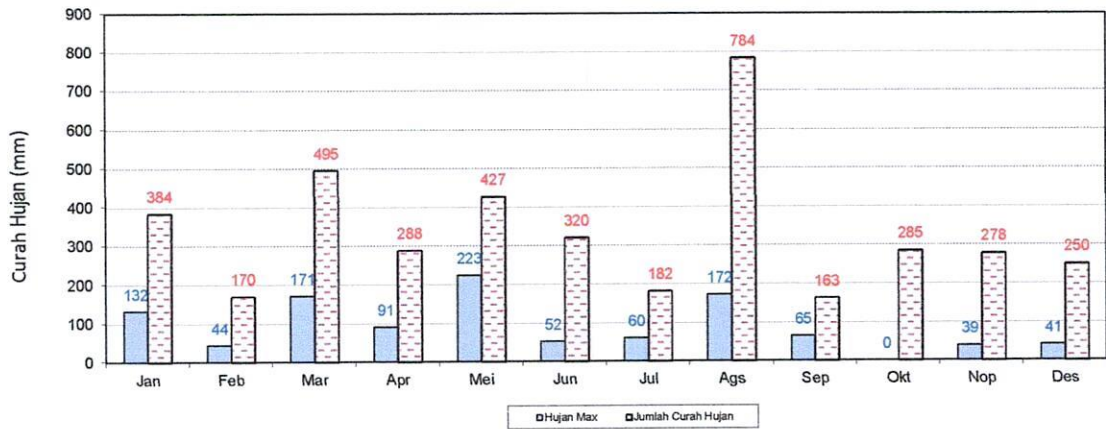
Perhitungan statistik tidak dilakukan bilamana jumlah data kosong dalam setengah bulan > 5 hari
Tampilan grafik hujan harian negatif berarti pada tanggal tersebut tidak ada data hujan harian

5 hari

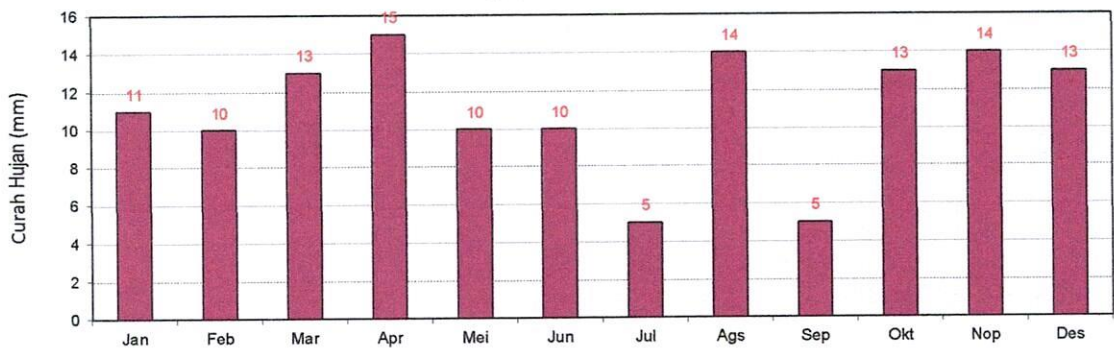
STATISTIK CURAH HUJAN HARIAN (MM) 2023
STASIUN : GUNUNG NAGO



GRAFIK : HUJAN MAX DAN JUMLAH HUJAN BULANAN (MM) 2023
STASIUN : GUNUNG NAGO



GRAFIK : JUMLAH HARI HUJAN (MM) 2023
STASIUN : GUNUNG NAGO



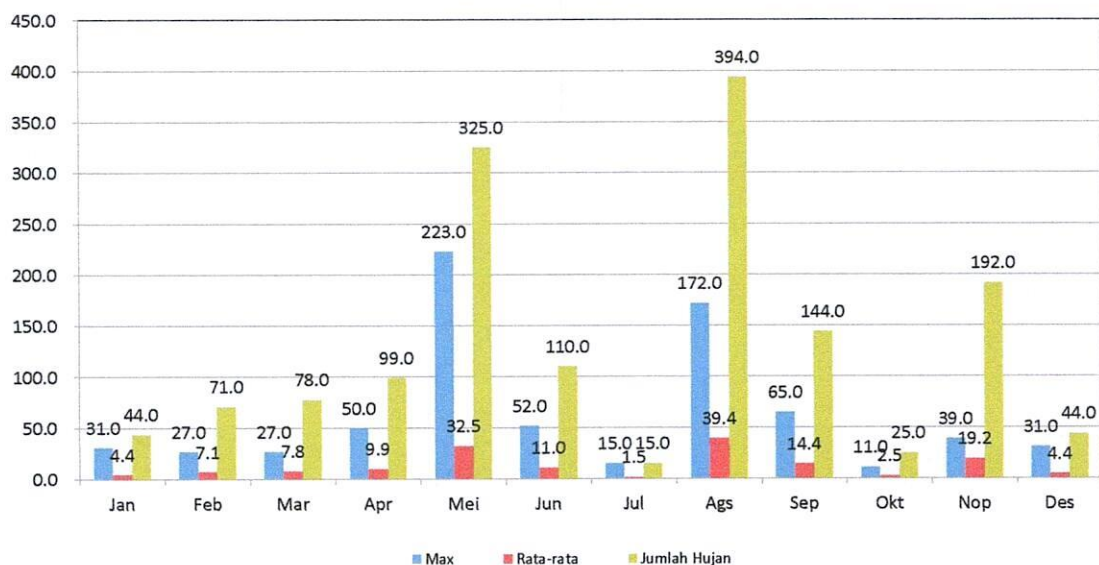
Curah Hujan Priode 10 Harian 1 (mm)

Nama Stasiun	GUNUNG NAGO	River Basin	Batang Kuranji
No Stasiun		Elevasi	
No In Database		Tipe alat	Manual
Lintang Selatan	-0.924511° LS	Pemilik	SDA & BK Wil Utara
Bujur Timur	100.434352° BT	Operator	ALIWAR

Tahun 2023

Tanggal	10 harian (1) mm											
	Jan	Feb	Mar	Apr	Mei	Jun	Jul	Ags	Sep	Okt	Nop	Des
1	0.0	27.0	27.0	12.0	7.0	0.0	0.0	0.0	0.0	11.0	16.0	0.0
2	0.0	0.0	6.0	14.0	4.0	0.0	0.0	172.0	0.0	0.0	35.0	31.0
3	0.0	0.0	25.0	10.0	7.0	0.0	0.0	0.0	0.0	0.0	39.0	0.0
4	0.0	5.0	0.0	0.0	0.0	0.0	0.0	0.0	0.0	0.0	4.0	0.0
5	0.0	2.0	0.0	50.0	0.0	41.0	0.0	53.0	0.0	0.0	12.0	0.0
6	0.0	21.0	0.0	6.0	31.0	17.0	15.0	0.0	65.0	0.0	6.0	5.0
7	8.0	0.0	0.0	0.0	223.0	0.0	0.0	43.0	14.0	5.0	13.0	0.0
8	31.0	0.0	0.0	0.0	17.0	0.0	0.0	0.0	0.0	9.0	30.0	8.0
9	0.0	0.0	0.0	7.0	36.0	52.0	0.0	126.0	0.0	0.0	0.0	0.0
10	5.0	16.0	20.0	0.0	0.0	0.0	0.0	0.0	65.0	0.0	37.0	0.0
Max	31.0	27.0	27.0	50.0	223.0	52.0	15.0	172.0	65.0	11.0	39.0	31.0
Min	0.0	0.0	0.0	0.0	0.0	0.0	0.0	0.0	0.0	0.0	0.0	0.0
Rata-rata	4.4	7.1	7.8	9.9	32.5	11.0	1.5	39.4	14.4	2.5	19.2	4.4
Jumlah Hujan	44.0	71.0	78.0	99.0	325.0	110.0	15.0	394.0	144.0	25.0	192.0	44.0

GRAFIK : CURAH HUJAN PRIODE 10 HARIAN 1 (MM)
STASIUN : GUNUNG NAGO



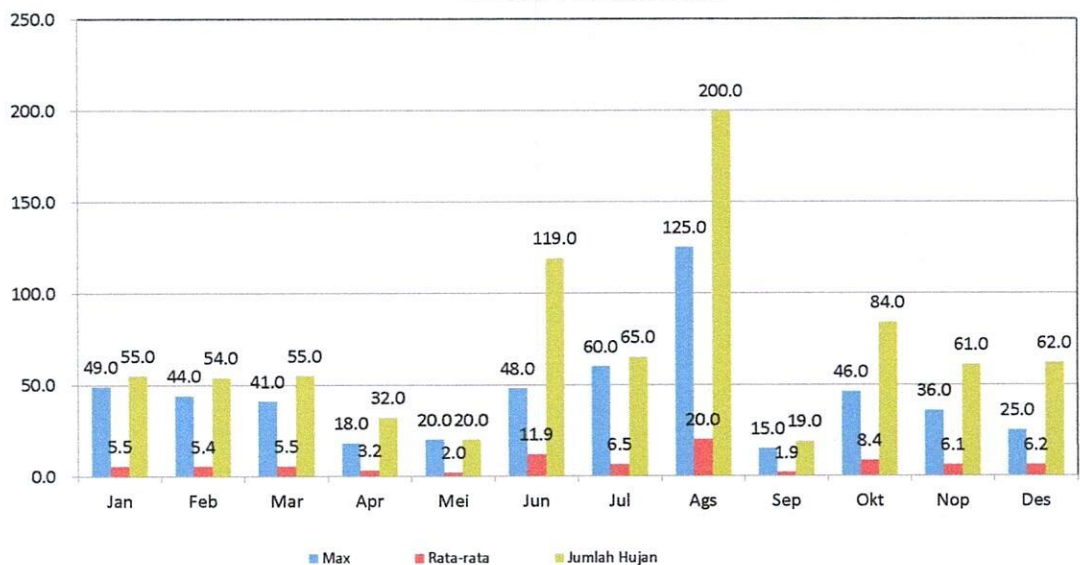
Curah Hujan Priode 10 Harian 2 (mm)

Nama Stasiun	GUNUNG NAGO	River Basin	Batang Kuranji
No Stasiun		Elevasi	
No In Database		Tipe alat	Manual
Lintang Selatan	-0.924511° LS	Pemilik	SDA & BK Wil Utara
Bujur Timur	100.434352° BT	Operator	ALIWAR

Tahun 2023

Tanggal	10 Harian (2) mm											
	Jan	Feb	Mar	Apr	Mei	Jun	Jul	Ags	Sep	Okt	Nop	Des
11	0.0	0.0	0.0	0.0	0.0	0.0	5.0	12.0	0.0	27.0	14.0	0.0
12	0.0	44.0	41.0	0.0	0.0	0.0	0.0	0.0	0.0	0.0	36.0	0.0
13	0.0	10.0	0.0	0.0	0.0	36.0	60.0	12.0	0.0	0.0	0.0	0.0
14	0.0	0.0	0.0	0.0	0.0	0.0	0.0	26.0	0.0	0.0	0.0	5.0
15	0.0	0.0	0.0	18.0	0.0	48.0	0.0	25.0	0.0	0.0	0.0	0.0
16	6.0	0.0	8.0	4.0	0.0	35.0	0.0	0.0	0.0	0.0	11.0	0.0
17	0.0	0.0	0.0	0.0	0.0	0.0	0.0	0.0	0.0	0.0	0.0	0.0
18	49.0	0.0	6.0	0.0	0.0	0.0	0.0	125.0	4.0	11.0	0.0	21.0
19	0.0	0.0	0.0	10.0	20.0	0.0	0.0	0.0	0.0	46.0	0.0	25.0
20	0.0	0.0	0.0	0.0	0.0	0.0	0.0	0.0	15.0	0.0	0.0	11.0
Max	49.0	44.0	41.0	18.0	20.0	48.0	60.0	125.0	15.0	46.0	36.0	25.0
Min	0.0	0.0	0.0	0.0	0.0	0.0	0.0	0.0	0.0	0.0	0.0	0.0
Rata-rata	5.5	5.4	5.5	3.2	2.0	11.9	6.5	20.0	1.9	8.4	6.1	6.2
Jumlah Hujan	55.0	54.0	55.0	32.0	20.0	119.0	65.0	200.0	19.0	84.0	61.0	62.0

GRAFIK : CURAH HUJAN PRIODE 10 HARIAN 2 (MM)
STASIUN : GUNUNG NAGO



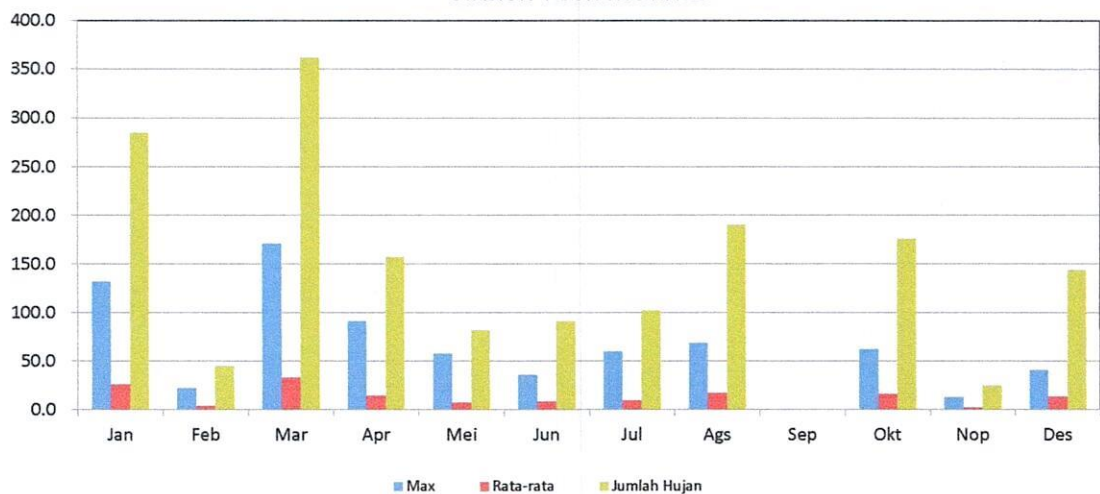
Curah Hujan priode 10 Harian 3 (mm)

Nama Stasiun	GUNUNG NAGO	River Basin	Batang Kuranji
No Stasiun		Elevasi	
No In Database		Tipe alat	Manual
Lintang Selatan	-0.924511° LS	Pemilik	SDA & BK Wil Utara
Bujur Timur	100.434352° BT	Operator	ALIWAR

Tahun 2023

Tanggal	Bulan											
	Jan	Feb	Mar	Apr	Mei	Jun	Jul	Ags	Sep	Okt	Nop	Des
21	32.0	0.0	33.0	24.0	0.0	0.0	0.0	38.0	0.0	11.0	0.0	11.0
22	19.0	0.0	0.0	7.0	0.0	0.0	0.0	0.0	0.0	0.0	0.0	0.0
23	14.0	17.0	63.0	10.0	0.0	36.0	0.0	9.0	0.0	0.0	0.0	0.0
24	132.0	22.0	16.0	0.0	0.0	0.0	0.0	0.0	0.0	5.0	0.0	0.0
25	0.0	6.0	171.0	0.0	0.0	0.0	0.0	0.0	0.0	27.0	13.0	31.0
26	0.0	0.0	0.0	0.0	0.0	36.0	0.0	69.0	0.0	62.0	0.0	19.0
27	47.0	0.0	0.0	18.0	0.0	12.0	0.0	48.0	0.0	53.0	12.0	0.0
28	41.0	0.0	0.0	7.0	0.0	0.0	42.0	26.0	0.0	0.0	0.0	0.0
29	0.0	0.0	39.0	91.0	24.0	7.0	0.0	0.0	0.0	0.0	0.0	23.0
30	0.0	0.0	0.0	0.0	0.0	0.0	60.0	0.0	0.0	8.0	0.0	41.0
31	0.0	0.0	40.0	0.0	58.0	0.0	0.0	0.0	0.0	10.0	0.0	19.0
Max	132.0	22.0	171.0	91.0	58.0	36.0	60.0	69.0	0.0	62.0	13.0	41.0
Min	0.0	0.0	0.0	0.0	0.0	0.0	0.0	0.0	0.0	0.0	0.0	0.0
Rata-rata	25.9	4.1	32.9	14.3	7.5	8.3	9.3	17.3	0.0	16.0	2.3	13.1
Jumlah Hujan	285.0	45.0	362.0	157.0	82.0	91.0	102.0	190.0	0.0	176.0	25.0	144.0

GRAFIK : CURAH HUJAN PRIODE 10 HARIAN 3 (MM)
STASIUN : GUNUNG NAGO

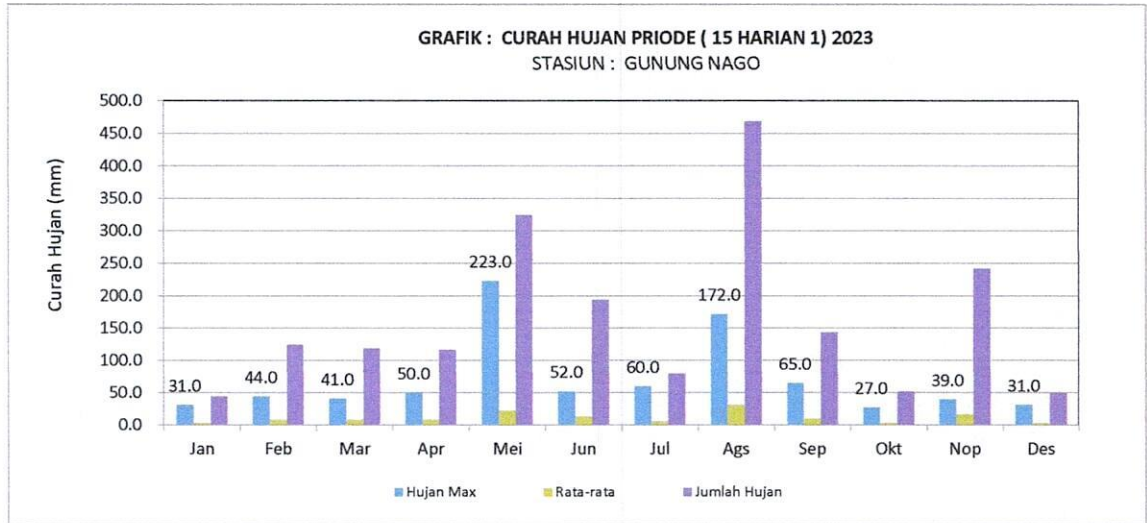


Curah Hujan Priode 15 Harian 1 (mm)

Nama Stasiun	GUNUNG NAGO	River Basin	Batang Kuranji
No Stasiun		Elevasi	
No In Database		Tipe alat	Manual
Lintang Selatan	-0.924511° LS	Pemilik	SDA & BK Wil Utara
Bujur Timur	100.434352° BT	Operator	ALIWAR

Tahun 2023

Tanggal	15 Harian (1)											
	Jan	Feb	Mar	Apr	Mei	Jun	Jul	Ags	Sep	Okt	Nop	Des
1	0.0	27.0	27.0	12.0	7.0	0.0	0.0	0.0	0.0	11.0	16.0	0.0
2	0.0	0.0	6.0	14.0	4.0	0.0	0.0	172.0	0.0	0.0	35.0	31.0
3	0.0	0.0	25.0	10.0	7.0	0.0	0.0	0.0	0.0	0.0	39.0	0.0
4	0.0	5.0	0.0	0.0	0.0	0.0	0.0	0.0	0.0	0.0	4.0	0.0
5	0.0	2.0	0.0	50.0	0.0	41.0	0.0	53.0	0.0	0.0	12.0	0.0
6	0.0	21.0	0.0	6.0	31.0	17.0	15.0	0.0	65.0	0.0	6.0	5.0
7	8.0	0.0	0.0	0.0	223.0	0.0	0.0	43.0	14.0	5.0	13.0	0.0
8	31.0	0.0	0.0	0.0	17.0	0.0	0.0	0.0	0.0	9.0	30.0	8.0
9	0.0	0.0	0.0	7.0	36.0	52.0	0.0	126.0	0.0	0.0	0.0	0.0
10	5.0	16.0	20.0	0.0	0.0	0.0	0.0	0.0	65.0	0.0	37.0	0.0
11	0.0	0.0	0.0	0.0	0.0	0.0	5.0	12.0	0.0	27.0	14.0	0.0
12	0.0	44.0	41.0	0.0	0.0	0.0	0.0	0.0	0.0	0.0	36.0	0.0
13	0.0	10.0	0.0	0.0	0.0	36.0	60.0	12.0	0.0	0.0	0.0	0.0
14	0.0	0.0	0.0	0.0	0.0	0.0	0.0	26.0	0.0	0.0	0.0	5.0
15	0.0	0.0	0.0	18.0	0.0	48.0	0.0	25.0	0.0	0.0	0.0	0.0
Max	31.0	44.0	41.0	50.0	223.0	52.0	60.0	172.0	65.0	27.0	39.0	31.0
Min	0.0	0.0	0.0	0.0	0.0	0.0	0.0	0.0	0.0	0.0	0.0	0.0
Rata-rata	2.9	8.3	7.9	7.8	21.7	12.9	5.3	31.3	9.6	3.5	16.1	3.3
Jumlah Hujan	44.0	125.0	119.0	117.0	325.0	194.0	80.0	469.0	144.0	52.0	242.0	49.0



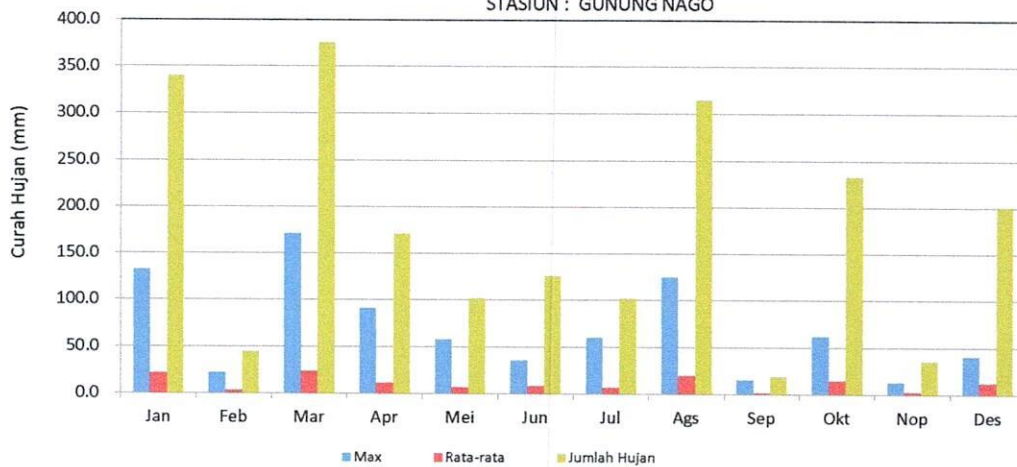
Curah Hujan Priode 15 Harian 2 (mm)

Nama Stasiun	GUNUNG NAGO	River Basin	Batang Kuranji
No Stasiun		Elevasi	
No In Database		Tipe alat	Manual
Lintang Selatan	-0.924511° LS	Pemilik	SDA & BK Wil Utara
Bujur Timur	100.434352° BT	Operator	ALIWAR

Tahun 2023

Tanggal	15 Harian (2)											
	Jan	Feb	Mar	Apr	Mei	Jun	Jul	Ags	Sep	Okt	Nop	Des
16	6.0	0.0	8.0	4.0	0.0	35.0	0.0	0.0	0.0	0.0	11.0	0.0
17	0.0	0.0	0.0	0.0	0.0	0.0	0.0	0.0	0.0	0.0	0.0	0.0
18	49.0	0.0	6.0	0.0	0.0	0.0	0.0	125.0	4.0	11.0	0.0	21.0
19	0.0	0.0	0.0	10.0	20.0	0.0	0.0	0.0	0.0	46.0	0.0	25.0
20	0.0	0.0	0.0	0.0	0.0	0.0	0.0	0.0	15.0	0.0	0.0	11.0
21	32.0	0.0	33.0	24.0	0.0	0.0	0.0	38.0	0.0	11.0	0.0	11.0
22	19.0	0.0	0.0	7.0	0.0	0.0	0.0	0.0	0.0	0.0	0.0	0.0
23	14.0	17.0	63.0	10.0	0.0	36.0	0.0	9.0	0.0	0.0	0.0	0.0
24	132.0	22.0	16.0	0.0	0.0	0.0	0.0	0.0	0.0	5.0	0.0	0.0
25	0.0	6.0	171.0	0.0	0.0	0.0	0.0	0.0	0.0	27.0	13.0	31.0
26	0.0	0.0	0.0	0.0	0.0	36.0	0.0	69.0	0.0	62.0	0.0	19.0
27	47.0	0.0	0.0	18.0	0.0	12.0	0.0	48.0	0.0	53.0	12.0	0.0
28	41.0	0.0	0.0	7.0	0.0	0.0	42.0	26.0	0.0	0.0	0.0	0.0
29	0.0	0.0	39.0	91.0	24.0	7.0	0.0	0.0	0.0	0.0	0.0	23.0
30	0.0	0.0	0.0	0.0	0.0	0.0	60.0	0.0	0.0	8.0	0.0	41.0
31	0.0	0.0	40.0	0.0	58.0	0.0	0.0	0.0	0.0	10.0	0.0	19.0
Max	132.0	22.0	171.0	91.0	58.0	36.0	60.0	125.0	15.0	62.0	13.0	41.0
Min	0.0	0.0	0.0	0.0	0.0	0.0	0.0	0.0	0.0	0.0	0.0	0.0
Rata-rata	21.3	3.5	23.5	11.4	6.4	8.4	6.4	19.7	1.3	14.6	2.4	12.6
Jumlah Hujan	340.0	45.0	376.0	171.0	102.0	126.0	102.0	315.0	19.0	233.0	36.0	201.0

GRAFIK : CURAH HUJAN PRIODE (15 HARIAN 2) 2023
STASIUN : GUNUNG NAGO



Curah Hujan Priode Bulanan (mm)

Nama Stasiun	GUNUNG NAGO	River Basin	Batang Kuranji
No Stasiun	0	Elevasi	0
No In Database	0	Tipe alat	Manual
Lintang Selatan	-0.924511° LS	Pemilik	SDA & BK Wil Utara
Bujur Timur	100.434352° BT	Operator	ALIWAR

Tahun 2023

Tanggal	Bulan											
	Jan	Feb	Mar	Apr	Mei	Jun	Jul	Ags	Sep	Okt	Nop	Des
1	0.0	27.0	27.0	12.0	7.0	0.0	0.0	0.0	0.0	11.0	16.0	0.0
2	0.0	0.0	6.0	14.0	4.0	0.0	0.0	172.0	0.0	0.0	35.0	31.0
3	0.0	0.0	25.0	10.0	7.0	0.0	0.0	0.0	0.0	0.0	39.0	0.0
4	0.0	5.0	0.0	0.0	0.0	0.0	0.0	0.0	0.0	0.0	4.0	0.0
5	0.0	2.0	0.0	50.0	0.0	41.0	0.0	53.0	0.0	0.0	12.0	0.0
6	0.0	21.0	0.0	6.0	31.0	17.0	15.0	0.0	65.0	0.0	6.0	5.0
7	8.0	0.0	0.0	0.0	223.0	0.0	0.0	43.0	14.0	5.0	13.0	0.0
8	31.0	0.0	0.0	0.0	17.0	0.0	0.0	0.0	0.0	9.0	30.0	8.0
9	0.0	0.0	0.0	7.0	36.0	52.0	0.0	126.0	0.0	0.0	0.0	0.0
10	5.0	16.0	20.0	0.0	0.0	0.0	0.0	0.0	65.0	0.0	37.0	0.0
11	0.0	0.0	0.0	0.0	0.0	0.0	5.0	12.0	0.0	27.0	14.0	0.0
12	0.0	44.0	41.0	0.0	0.0	0.0	0.0	0.0	0.0	0.0	36.0	0.0
13	0.0	10.0	0.0	0.0	0.0	36.0	60.0	12.0	0.0	0.0	0.0	0.0
14	0.0	0.0	0.0	0.0	0.0	0.0	0.0	26.0	0.0	0.0	0.0	5.0
15	0.0	0.0	0.0	18.0	0.0	48.0	0.0	25.0	0.0	0.0	0.0	0.0
16	6.0	0.0	8.0	4.0	0.0	35.0	0.0	0.0	0.0	0.0	11.0	0.0
17	0.0	0.0	0.0	0.0	0.0	0.0	0.0	0.0	0.0	0.0	0.0	0.0
18	49.0	0.0	6.0	0.0	0.0	0.0	0.0	125.0	4.0	11.0	0.0	21.0
19	0.0	0.0	0.0	10.0	20.0	0.0	0.0	0.0	0.0	46.0	0.0	25.0
20	0.0	0.0	0.0	0.0	0.0	0.0	0.0	0.0	15.0	0.0	0.0	11.0
21	32.0	0.0	33.0	24.0	0.0	0.0	0.0	38.0	0.0	11.0	0.0	11.0
22	19.0	0.0	0.0	7.0	0.0	0.0	0.0	0.0	0.0	0.0	0.0	0.0
23	14.0	17.0	63.0	10.0	0.0	36.0	0.0	9.0	0.0	0.0	0.0	0.0
24	132.0	22.0	16.0	0.0	0.0	0.0	0.0	0.0	0.0	5.0	0.0	0.0
25	0.0	6.0	171.0	0.0	0.0	0.0	0.0	0.0	0.0	27.0	13.0	31.0
26	0.0	0.0	0.0	0.0	0.0	36.0	0.0	69.0	0.0	62.0	0.0	19.0
27	47.0	0.0	0.0	18.0	0.0	12.0	0.0	48.0	0.0	53.0	12.0	0.0
28	41.0	0.0	0.0	7.0	0.0	0.0	42.0	26.0	0.0	0.0	0.0	23.0
29	0.0	0.0	39.0	91.0	24.0	7.0	0.0	0.0	0.0	0.0	0.0	0.0
30	0.0	0.0	0.0	0.0	0.0	0.0	60.0	0.0	0.0	8.0	0.0	41.0
31	0.0	0.0	40.0	0.0	58.0	0.0	0.0	0.0	0.0	10.0	0.0	19.0
Max	132.0	44.0	171.0	91.0	223.0	52.0	60.0	172.0	65.0	62.0	39.0	41.0
Min	0.0	0.0	0.0	0.0	0.0	0.0	0.0	0.0	0.0	0.0	0.0	0.0
Rata-rata	12.4	5.5	16.0	9.3	13.8	10.3	5.9	25.3	5.3	9.2	9.0	8.1
Jumlah Hujan	384.0	170.0	495.0	288.0	427.0	320.0	182.0	784.0	163.0	285.0	278.0	250.0

GRAFIK : CURAH HUJAN PRIODE BULANAN (MM) 2023

STASIUN : GUNUNG NAGO

